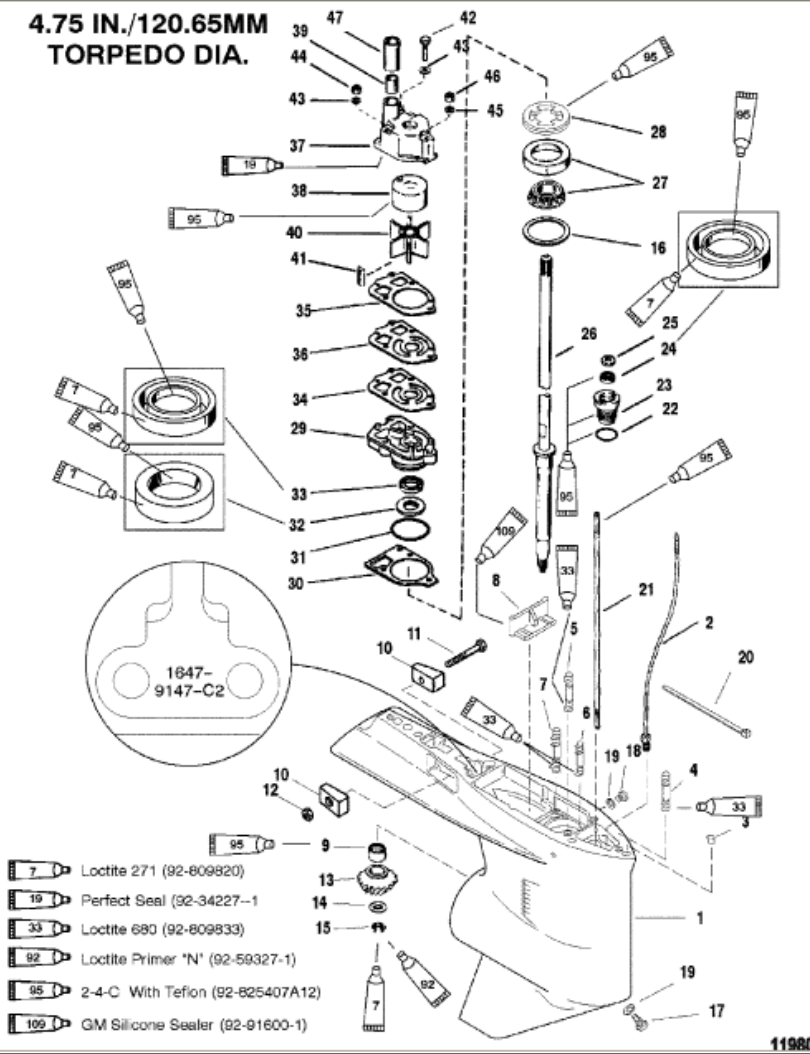


**4.75 IN./120.65MM  
 TORPEDO DIA.**



- Loctite 271 (92-809820)
- Perfect Seal (92-34227-1)
- Loctite 680 (92-809833)
- Loctite Primer 'N' (92-59327-1)
- 2-4-C With Teflon (92-825407A12)
- GM Silicone Sealer (92-91600-1)

**Parts List**

| Ref | Class | Part     | Description                       | Qty | Comment                          | Footnote |
|-----|-------|----------|-----------------------------------|-----|----------------------------------|----------|
| 1   | 1647  | 9148A93  | GEAR HOUSING                      | 1   | (Black) (Basic)                  |          |
| 1   | 1647  | 9148A94  | GEAR HOUSING                      | 1   | (Gray) (Basic)                   |          |
| 2   | 22    | 85822A10 | CONNECTOR ASSEMBLY                | 1   |                                  |          |
| 3   | 17    | 43044    | PIN, Dowel (.375 x .625) (Withou  | 2   |                                  |          |
| 4   | 16    | 18978    | 3 STUD, (.438 x 3.82 Inches)      | 1   |                                  |          |
| 5   | 16    | 57920    | 3 STUD, (.437-14/.437-20 x 2.060) | 2   |                                  |          |
| 6   | 16    | 56297    | 2 STUD, (.312-18/.324-24 x 3.380) | 1   |                                  |          |
| 7   | 16    | 30667    | STUD, (.250-20/.250-28 x 3.125)   | 2   |                                  |          |
| 8   |       | 67891    | FILLER BLOCK                      | 1   |                                  |          |
| 9   | 31    | 42647A   | 1 BEARING ASSEMBLY, Roller        | 1   |                                  |          |
| 10  |       | 826134   | ANODE                             | 2   |                                  |          |
| 11  | 10    | 40003    | 33 SCREW, (M6 x 40)               | 1   |                                  |          |
| 12  | 11    | 826833   | 6 NUT, (M6)                       | 1   |                                  |          |
| 13  |       | NSS      | NOT SOLD SEPARATE, Pinion Ge      | 1   | (2.0:1 Gear Ratio - 14 Teeth)    | 7        |
| 13  |       | NSS      | NOT SOLD SEPARATE, Pinion Ge      | 1   | (1.87:1 Gear Ratio - 15 Teeth)   | 7        |
| 14  | 12    | 92721    | WASHER                            | 1   | (Included With Forward Gear Set) |          |
| 15  | 11    | 35921    | NUT, (.625-18)                    | 1   | (Included With Forward Gear Set) |          |
| 16  | 15    | 42637A   | 1 SHIM SET                        | AR  | (Included With Forward Gear Set) | 9        |
| 17  | 22    | 67892A   | 1 FITTING KIT, Plug Fill/Drain    | 1   |                                  |          |
| 18  | 10    | 79953A   | 2 SCREW KIT, (.375-16 x .250)     | 1   |                                  |          |
| 19  | 12    | 19183    | 2 WASHER, Fiber                   | 2   |                                  | 10,8     |
| 20  |       | 56762    | 1 CABLE TIE, (4.00 Inches)        | 1   |                                  |          |
| 21  |       | 78902    | 2 SHIFT SHAFT                     | 1   |                                  |          |
| 22  | 25    | 25439    | 1 O-RING, (.862 x .103)           | 1   |                                  | 4,8      |
| 23  | 23    | 77631A   | 2 BUSHING ASSEMBLY                | 1   |                                  | 8        |
| 24  | 26    | 816464   | 1 SEAL, Oil                       | 1   |                                  | 8        |
| 25  | 12    | 77674    | 1 WASHER                          | 1   |                                  |          |
| 26  | 45    | 44209    | 1 DRIVESHAFT                      | 1   |                                  |          |
| 27  | 31    | 36387A   | 1 BEARING, Roller                 | 1   |                                  |          |
| 28  |       | 824519   | 1 RETAINER                        | 1   |                                  |          |
| 29  | 46    | 42579A   | 3 WATER PUMP BASE ASSEMBLY        | 1   |                                  |          |
| 30  | 27    | 42631    | 1 GASKET                          | 1   |                                  | 4,10,8   |
| 31  | 25    | 90011    | 1 O-RING, (2.175 x .175)          | 1   |                                  | 4,10,8   |
| 32  | 26    | 89238    | 1 OIL SEAL                        | 1   |                                  | 8        |
| 33  | 26    | 16977    | 1 OIL SEAL                        | 1   |                                  | 8        |
| 34  | 27    | 85608    | 1 GASKET                          | 1   |                                  | 4,10,8   |
| 35  | 27    | 85609    | 1 GASKET                          | 1   |                                  | 4,10,8   |
| 36  |       | 32435    | 1 FACE PLATE                      | 1   |                                  | 10       |
| 37  | 46    | 96148A   | 1 WATER PUMP BODY ASSEMBLY        | 1   |                                  | 10       |
| 38  |       | 48752    | 1 INSERT                          | 1   |                                  | 10       |
| 39  | 26    | 28970    | 1 SEAL                            | 1   |                                  | 4,10,8   |